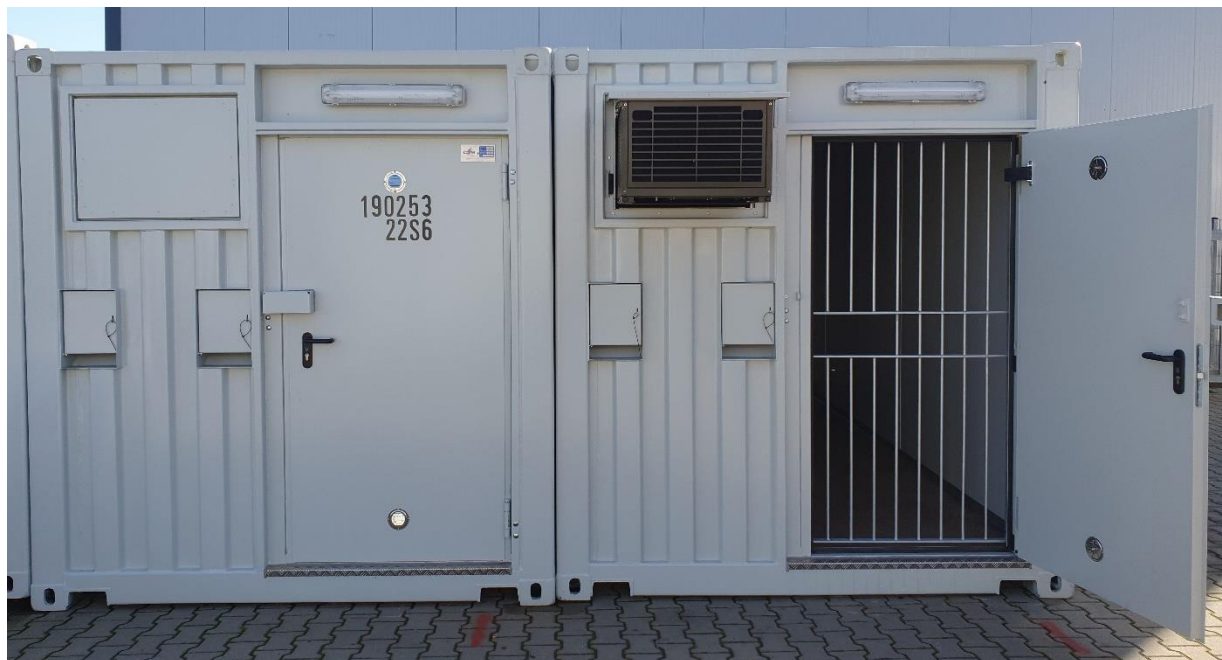


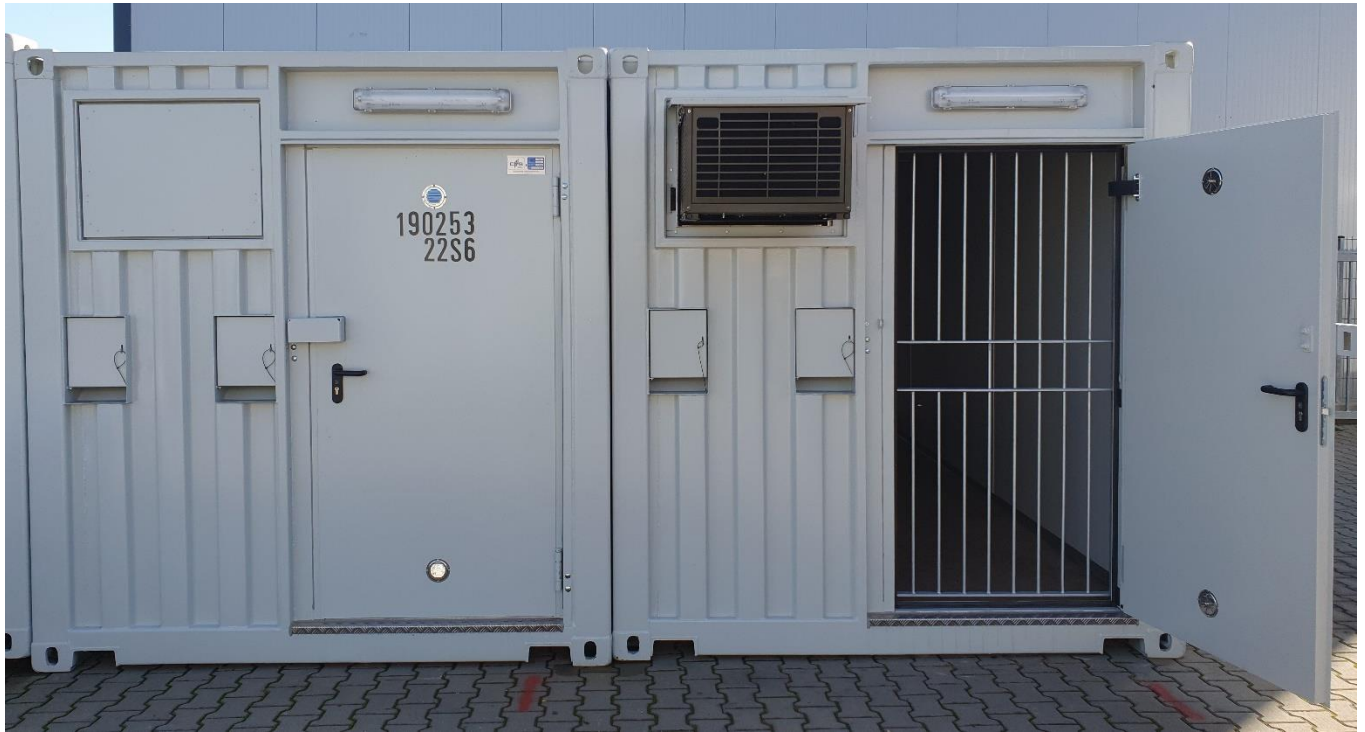
Mobile Arms Storage System



U.S. Military Veteran Owned Business

Mission of providing Quality Equipment to the Warfighter

Mobile Arms Storage System



Container, Mobile AR
Part Number: BT MR001
NSN: 8145-01-603-5483

Portable Armory/Arms Room in a 20 ft ISO/CSC Certified Security Container; deployable by truck, ship, train & plane. Walls are insulated and panelled with non-flammable material, 220v outlets (110v by request), overhead lighting, circuit breaker box, outside junction box for external power source, climate control unit, Intrusion Detection System, secondary entrance cage door (issue door), & outside Security lighting above access door.

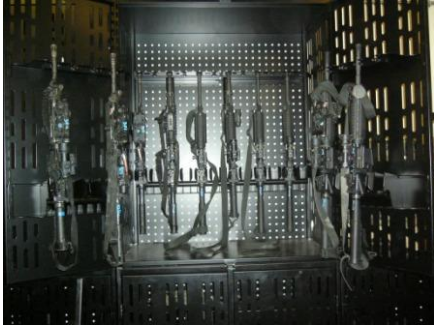
Containers come with our standard configuration. Systems can be customized per request.

Easily Transportable



Deployable Arms Room Containers accommodate rifles and shotguns with launchers, scopes, optics and other accessories, also small arms and gun cases. 20 ft container has lifting eyelets for transfer to transport vehicles. Heavy-service, solid steel construction; secure weapons horizontally or vertically in Cabinets that can be reconfigured instantly. Making this the rapid access gun storage unit of choice for the Military, National Guard, Police Departments, and Correctional Facilities.

Standard Cabinet System Examples



**M16 & M4 Cabinet
(20 ea Weapons)**



**M2 50 Cal Cabinet
(5 ea Weapons)**

Configuration Examples



Standard Configuration



**Custom Configuration
Per unit request**

Climate Control Unit



Extended for Operation



Easily Stowed for Transport



Simple Controls

Outside Intrusion Detection System Components



**Siren & Strobe with
Anti-tampering Switch**



Mobile Siren & Strobe



**Touch Tone Keypad with
audible signals**

Inside Intrusion Detection System Components



**Control Panel-Siren-
Transmitter**



GSM Telephone Dialer

Intrusion Detection System with integrated Smoke Detector, Touchtone keypad, sirens & strobes, interior motion sensors and an inside control panel. All components are supplied with a 3 year battery so no power source is needed



**Movement Sensors
Front & Back**



Door Entry Sensor



Smoke Detector



Secondary Entrance

Electrical System



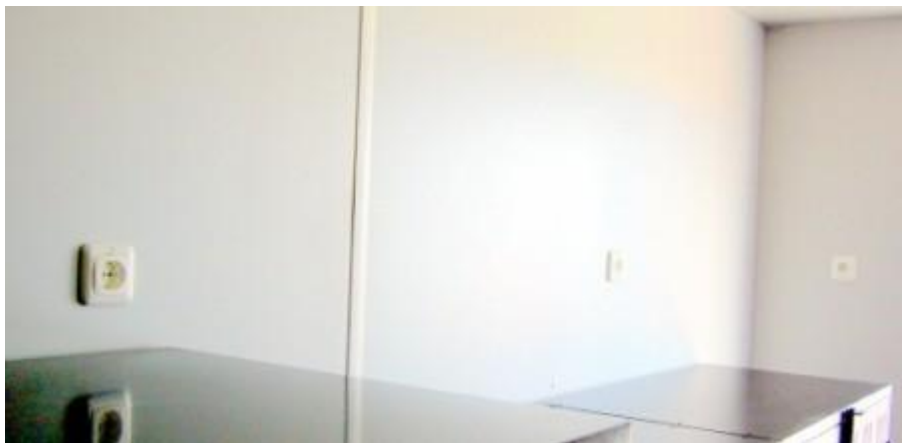
Fuse Box



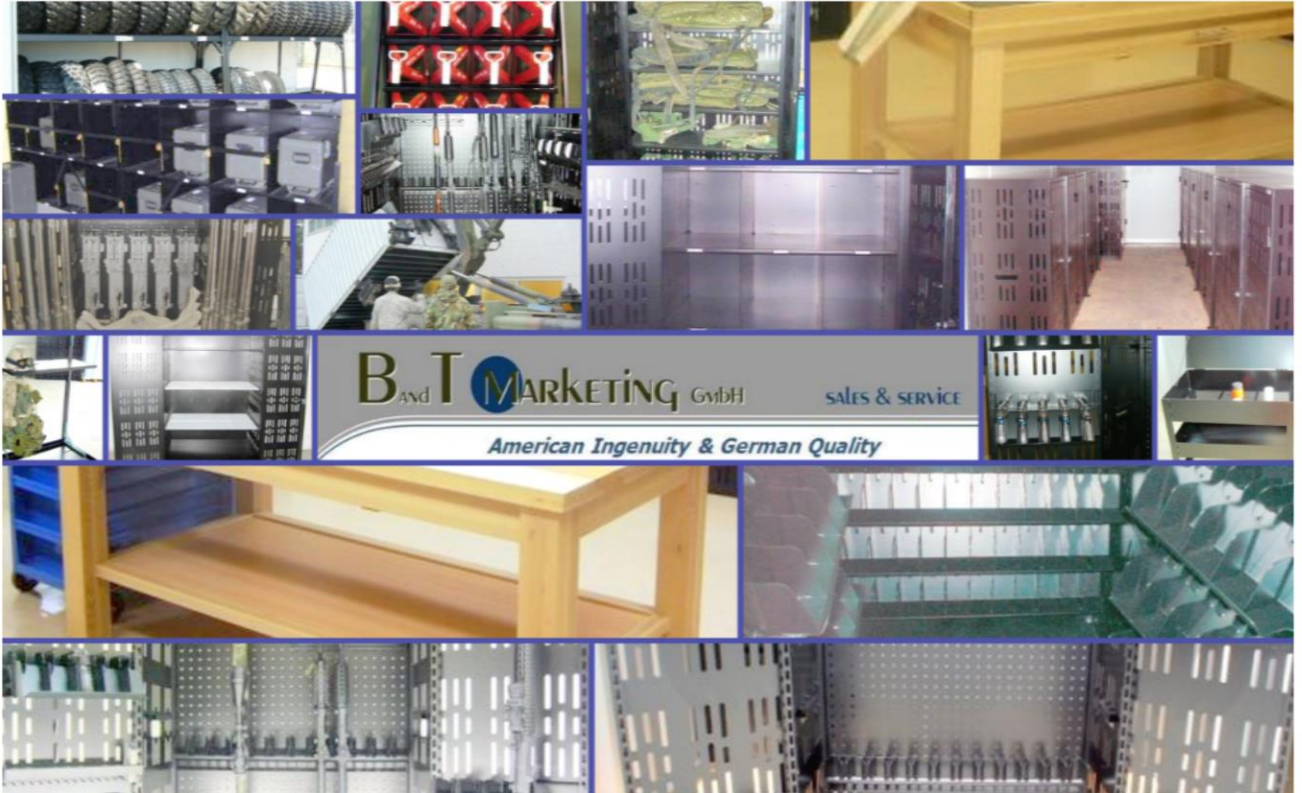
External Power hookup



Overhead Lighting



Walls Insulated & Paneled including Outlets



Contact us at;

info@bandtmarketing.com
www.bandtmarketing.com

James Brice-CEO
Office: +49 (0)9503 504121
Cell: +49 (0)172 8196664
Email: james.brice@bandtmarketing.com

Scott A. Swieda-Sale Manager
Office: +49 (0) 9503 504121
Cell: +49 (0) 172 5192492
Email: s.swieda@bandtmarketing.com